



## Principal's Message

We are looking forward to celebrating **Education Week** this year next Tuesday, 13 May, by opening our classroom and specialist rooms to our school community for an hour after school.



The annual celebration of education is a chance for our students to take part in free and fun activities at school, with an opportunity to share what makes our school great. This year's theme, *Celebration of Cultures*, highlights the diversity of our communities and the importance of every child feeling safe and welcome. We are celebrating Education Week one week prior to the Victorian Celebration at most schools.

**We invite** parents, carers and families to visit our learning spaces and celebrate learning and achievement with our students. Classrooms and specialist rooms will be open from 3.50 to 4.50 pm.

### School Review

Our school will be undertaking a school review early in Term 4 this year. Schools undertake a school review every four years to review the previous 4-Year Strategic Plan and goals and inform the directions of the school's next 4-year School Strategic Plan (SSP). The Education Department provides an independent reviewer who also assesses compliance with the Curriculum and Student Learning Minimum Standard. School review is a key element of the Framework for Improving Student Outcomes improvement cycle for government schools. The Review Panel consists of the Principal and Assistant Principals, the School Council President, two other Primary School principals (Challenge Partners) and the School Reviewer.

### School Wellbeing Information

Student Wellbeing at Glendal Primary School is a whole school approach designed to create a safe, positive and supportive environment where all students can develop and learn to the best of their ability. Our school values form the basis of behavioural expectations and include Responsibility, Resilience, Teamwork, Creativity and Community with an overarching value of Respect. We foster student voice, agency and leadership, further developing school pride.

Our Student Wellbeing approach includes Respectful Relationships, Zones of Regulation, and Restorative Practices. This is enhanced by a range of evidence-based programs and initiatives targeted to specific year levels. This is strengthened by our Student Support Team, which includes an on-site speech pathologist and psychologist, who lead a range of social and emotional programs across the school – Mr Josh Crozier, Assistant Principal (Wellbeing).

## What's On...

### May

Wednesday 07	Year 6 Camp
Thursday 08	Mother's Day Stall Year 6 Camp
Friday 09	Mother's Day Stall Year 6 Camp
Monday 12	District Cross Country – qualifying students
Tuesday 13	3:50-4:50pm Glendal's Open Afternoon
Thursday 15	Year 1 KidsROAR in-school visit Year 3 STEM Day (Girl Power)
Friday 16	9:00-11:00am Year 6 Interschool Sports
Monday 19	2:45pm Foundation, Year 1 and 2 Assembly
Wednesday 21	Year 6 Student Leader Day – Mount View Primary School
Thursday 22	Year 1 Scienceworks Excursion
Friday 23	Year 4 Werribee Zoo Excursion 9:00-11:00am Year 6 Interschool Sports
Tuesday 27	National Reconciliation Week Begins
Wednesday 28	Division Cross Country
Thursday 29	Year 3 MCG Excursion Year 4 & 5 Boys' Growing with Gratitude In-School Visit – All Day Workshop
Friday 30	9:00-11:00am Year 6 Interschool Sports

### Please Remember

**Thursday 8<sup>th</sup> & Friday 9<sup>th</sup> May we  
Have the Mother's Day Stall.**

### Term Dates

Term 1, 2025 – 29 January – 4 April
Term 2, 2025 – 22 April – 4 July
Term 3, 2025 – 21 July – 19 September
Term 4, 2025 – 6 October – 19 December



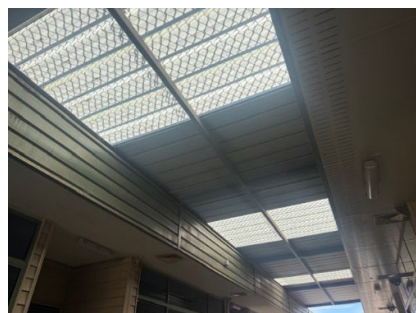
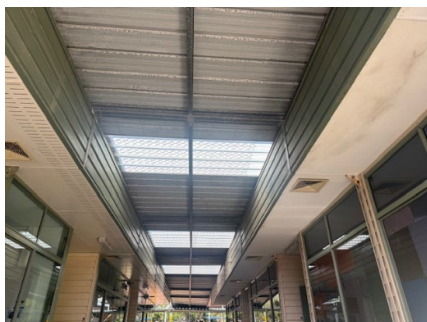
School commences at 9:00am & concludes at 3:30pm. The arrival of children at school will be supervised from 8:45am. Children will also be supervised while they are leaving school until 3:45pm.

**Please ensure your child arrives with enough time to get to their class. Late arrivals are a disruption to everyone.**

### School holiday works

We take the opportunity to complete important maintenance, annual inspections, construction and repairs over the school breaks. Over the Easter break, we replaced all the hot water units with heat pumps, utilising a Government rebate at no cost to the school. Servicing of all the gas heaters, oven, hotplate and Rinnai hot water unit outside the Science building was completed. Repairs were made to doors at the Hall and Library entrances, and the gutters were all cleaned.

An area outside the Year 6 building was concreted for a new table tennis table and repairs completed to some tripping hazards in concreted areas. Gardening and general grounds maintenance was carried out, including playgrounds. A new balustrade and landing rails were installed at the steps to the Mi Café to comply with safety standards. Clear roof coverings were installed between the Year 4 portable classrooms making that undercover area lighter.



## Attendance



Parents are requested to use the Compass Parent Portal to notify of any child absences, preferably on the day before 9:30am or prior to the day/s.

## New Address



如果您的住址和联系电话有变，  
请告知我校办公室。

### Have your circumstances changed?

Update your contact details at the School Office as soon as possible.

Please ensure you let the school office know if you have changed address or updated mobile phones with new numbers.

This information alleviates stressful situations on students when they are ill and we cannot contact parents.

## We are open...



Open Mondays  
8:45 am to 9:30am  
outside the MI cafe.

**Please donate your quality uniforms!**  
Place donations in the blue bin outside the staff room.



**It is NOT great to be LATE.**

## **Before and After School Supervision Parent Notification**

Student safety at Glendal Primary School is our highest priority and the safe and appropriate supervision of students is an important element of our duty of care to students. Part of this duty is ensuring parents and students are aware of our student supervision arrangements before and after school.

Before school: School grounds are supervised each school day from 8.45 am to 9.00 am.

After school: School grounds are supervised from 3.30 pm to 3.45 pm.

Students on school grounds outside these times will **not** be supervised unless they are attending a before or after school care program. If they are attending an extracurricular activity with one of our teachers, that teacher will provide supervision with written permission from the parents of the students attending the activity. Private providers of activities, such as Kelly Sports, Chess or music, will be responsible for student supervision.

Parents and Carers are requested to ensure that students do not attend school outside of these supervised times unless they are attending before or after school care, or a pre-arranged supervised activity organised by the school or a private provider (including Camp Australia OHSC).

Families are encouraged to contact the school office on 9803 1330 or Camp Australia at <https://campastralia.com.au> for more information about the before and after school care facilities available to our school community or if you would like any further information about our student supervision arrangements.

Please see the school website <https://glendalps.vic.edu.au/policy-documents> for our policies on student supervision and wellbeing or contact the school office.

Deborah Grosseck  
Principal



## EVERY DAY COUNTS

### PRIMARY SCHOOL ATTENDANCE

Going to school every day is the single most important part of your child's education. Students learn new things at school every day – missing school puts them behind.

### SCHOOL IS BETTER WHEN YOUR CHILD IS THERE

#### Why it's important

We all want our students to get a great education, and the building blocks for a great education begin with students coming to school each and every day.

If students miss school regularly, they miss out on learning the fundamental skills that will set them up for success in the later years of school.

There is no safe number of days for missing school – each day a student misses puts them behind, and can affect their educational outcomes.

Each missed day is associated with progressively lower achievement in numeracy, writing and reading.

#### Getting in early

Attendance patterns are established early – a child regularly missing days in kindergarten or in the early years of school will often continue to miss classes in the later years, and receive lower test scores than their classmates.

It's vital that students go to school every day – even in the early years of primary school.

### IN VICTORIA SCHOOL IS COMPULSORY FOR CHILDREN AND YOUNG PEOPLE AGED 6 -17 YEARS

#### Student Absences

The main reasons for absence are:

**Sickness** – There are always times when students need to miss school, such as when they're ill. It's vital that they're only away on the days they are genuinely sick, and developing good sleep patterns, eating well and exercising regularly can make a big difference.

**Family holidays** - It's vital that holidays are planned during school holidays where possible, and not during the term. If you are planning to go on holiday during term time, make sure that you talk to your child's school in advance, and work with them to develop an absence learning plan.

**"Day off"** – Think twice before letting your child have a "day off" as they could fall behind their classmates – every day counts.

**Truancy** – This is when students choose not to go to school without their parent's permission. There can be many reasons for truancy. The best way to address this is for schools and parents to work together.

# FINANCIAL ASSISTANCE

## INFORMATION FOR PARENTS

Every Victorian child should have access to the world of learning opportunities that exist beyond the classroom. The Camps, Sports and Excursions Fund helps ensure that no student will miss out on the opportunity to join their classmates for important, educational and fun activities. It is part of making Victoria the Education State and the Government's commitment to breaking the link between a student's background and their outcomes.

### CAMPS, SPORTS & EXCURSIONS FUND (CSEF)

School camps provide children with inspiring experiences in the great outdoors. Excursions encourage a deeper understanding of how the world works while sports teach teamwork, discipline and leadership. All are a part of a healthy curriculum.

CSEF is provided by the Victorian Government to assist eligible families to cover the costs of school trips, camps and sporting activities.

If you hold a valid means-tested concession card or are a temporary foster parent, you may be eligible for CSEF. A special consideration category also exists for asylum seeker and refugee families. The allowance is paid to the school to use towards expenses relating to camps, excursions or sporting activities for the benefit of your child.

The annual CSEF amount per student is:

- \$154 for primary school students
- \$258 for secondary school students

#### HOW TO APPLY

New applicants should contact the school office to obtain a CSEF application form or download from the website below.

If you applied for CSEF at your child's school last year, you do not need to complete an application form this year unless there has been a change in your family circumstances.

You only need to complete an application form if any of the following changes have occurred:

- **new student enrolments:** your child has started or changed schools this year.
- **changed family circumstances:** such as a change of custody, change of name, concession card number, or new siblings commencing this year.

Check with the school office if you are unsure

#### MORE INFORMATION

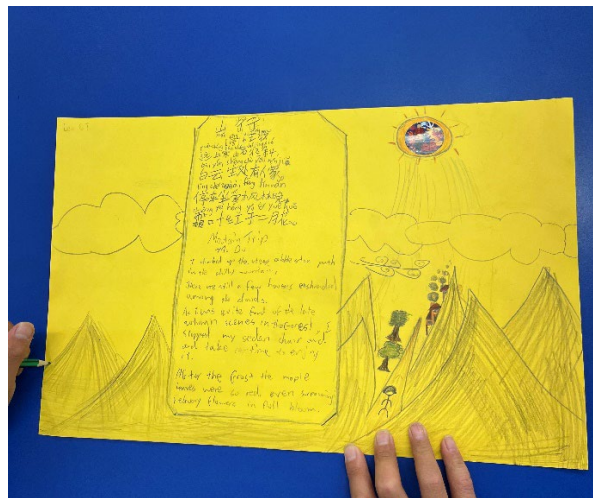
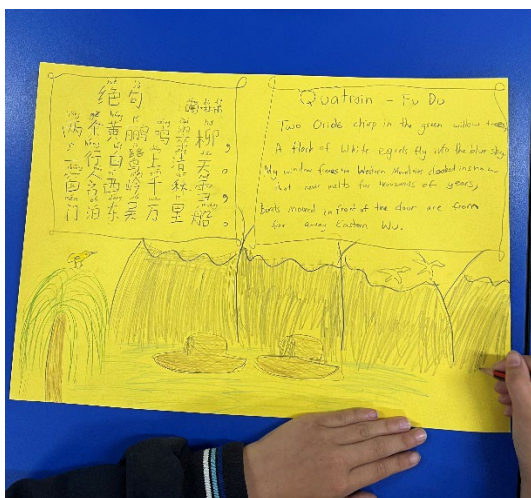
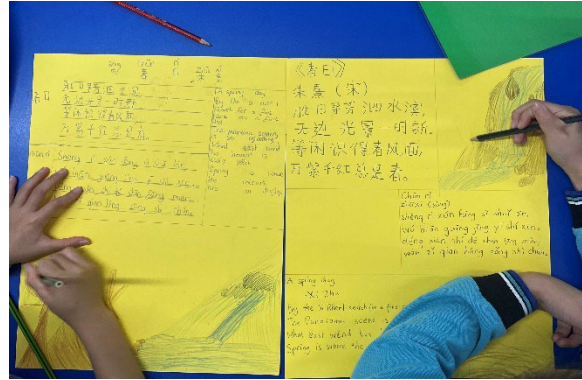
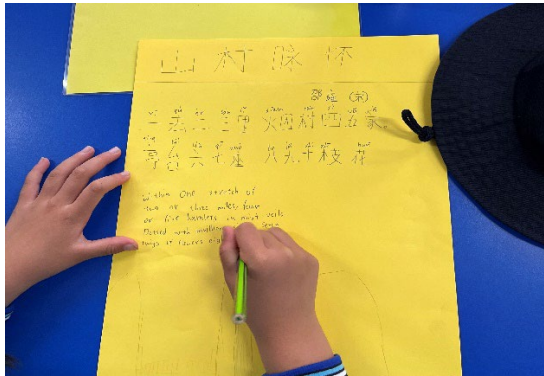
For more information about CSEF visit:

<https://www.vic.gov.au/camps-sports-and-excursions-fund>



## EXPLORATION OF CHINESE ANCIENT POEMS

Year 3-6 students enjoyed exploring some Chinese ancient poems, which helped them develop linguistic skills and gain better understanding of Chinese culture and history.





## CHESS NEWS TERM 1 2025

The Glendal chess team attended the inter-school tournament at Caulfield Grammar School.

I am happy to report that Glendal received third place and qualified for the semi-final.

Sannah was our best player, with 5.5 points from 7 games. Gautam, Daanish, Jaden, Swarra, William and Kaylin gained 5 points each. Congratulations to everyone.





## CHESS NEWS TERM 1 2025 – NO.2

Our Glendal chess team competed in the Northern Star Chess Primary Zonal at Kangaroo Ground Primary School. We gained first place for the whole team.

Kaylin won 6.5 out of 7 games, Toby won 6, Gautam and Jinay won 5.5, Daanish, Nicholas, Sannah and Swarra won 5 and Rumena won 4.5.

Congratulations to all of these students; they now qualify for the semi-final.



**Give Your Child the Gift of Music**

# **Learn a Musical Instrument**

here at school

Come and join in the fun of learning to play keyboard, guitar, here at Glendal Primary School.

Creative Music for Schools conducts a music program here at school each week.

Small group classes or one-to-one lessons of up to 30 minutes give children an excellent grounding in music where they will learn to read music and play their chosen instrument.

Enrolments are now being accepted for limited places in term 2.

Interested parents should call Sharon during office hours on 9818 2333 or via email: [sharon@creativemusic.com.au](mailto:sharon@creativemusic.com.au)



**Creative Music**

[www.creativemusic.com.au](http://www.creativemusic.com.au)



Outside School Hours Care

# Newsletter



May -2024

Glendal Primary School OSHC – 0423 794 695

Your  
OSHC.



On Fridays, we  
**pARTy!**



Every Friday in  
After School Care

**Book now**

Dear Parents and Caregivers,

Welcome back to Term 2.

We have an exciting term ahead, with events like **Mother's Day**, **Reconciliation Week (May 27 – June 3)**, and fun recycling projects sparking lots of creativity.

Get ready for cooking activities where your child can be a chef, and don't miss **LEGO Masters Week (May 12 – 16)** and the **LEGO Masters Edition (May 16 – June 20)**.

And remember—every Friday, we party!

Join in so you don't miss out on the fun!

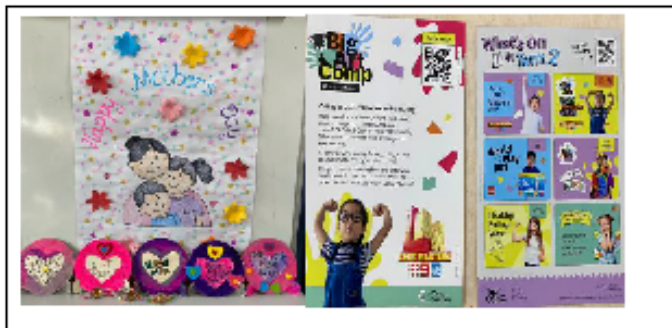
## Activities coming up

Mother's Day crafts

Lego creation

Bracelet creation

Baking cookies



## Make a booking

Join in the fun of Outside School Hours Care activities and experiences with Your OSHC and Rocketeers.

**Book now**

## Register free and book in 24/7 via our app

To attend our program, you must register your child. You can register an account with us at [pp.campastralia.com.au](http://pp.campastralia.com.au) or by downloading our Camp Australia smartphone app from the Apple App Store or on Google Play. Once registered, it's easy to make bookings and manage your account.



Find out more and book now at [www.campastralia.com.au](http://www.campastralia.com.au)

# GLENDAL SKI CLUB!

**THE INTERSCHOOL SNOWSPORTS  
CHAMPIONSHIPS!**

**COME JOIN US FOR THE FUN!!**

**CALLING ON ALL SNOWBOARDERS  
AND SKIERS OF ALL ABILITY!**



**AUGUST 18-24  
@ MT BULLER**



**FOR FURTHER INFORMATION:  
PLEASE ADD AND CONTACT AURORA'S MUM  
(WINNIE) ON WHATSAPP OR SMS: 0423 702 728**

Confidence

Communication Skills

Creativity

# superspeak



## Weekly public speaking, drama & presentation skills for ages 6-14

17 Venues Across  
**Melbourne**

- ★ Leading Curriculum
- ★ Experienced Teachers
- ★ Loads of FUN!

### communication

- ★ quick thinking
- ★ **expression**
- ★ teamwork
- ★ **confidence**
- ★ leadership
- ★ **persuasion**
- ★ vocal variety

**Award  
Winning  
Program**  
Trusted Since  
2006



### ENROL NOW

Glen Waverley,  
Balwyn North,  
Point Cook, Epping,  
Chadstone, Burwood,  
Essendon, Doncaster,  
Canterbury, Rowville,  
Ashburton, Ivanhoe,  
Caroline Springs,  
Truganina, Berwick  
& Altona Meadows

# 9572 5249

[info@SuperSpeak.com.au](mailto:info@SuperSpeak.com.au)

[www.SuperSpeak.com.au](http://www.SuperSpeak.com.au)