



Principal's Message

We have enjoyed a very successful start to the school term with lots of special activities to help our students settle in at school in their new class with their new teacher. We celebrated last Friday with icy poles and a picnic lunch outside altogether. Thank you to Mr Whitehead for organising everything.

Please take note of the very important information provided in this newsletter relating to Student Accident and Private Property Insurance, Ambulance cover, our Privacy Policy and student mobile phones at school. This information is published for the community every year in Term 1.



What's On...

February

- | | |
|--------------|---|
| Wednesday 14 | 9:30am Smoking Ceremony – in new house groups |
| Thursday 15 | 3:30-4:30pm Year 6 Student Leader Program |
| Friday 16 | 9:00-11:00am Year 6 Interschool Sports
11:45am Foundation Puppet Kerfuffle In-School Visit
Year 6 Halogen National Young Leaders Day |
| Monday 19 | 2:45pm Junior Assembly |
| Tuesday 20 | Online Parent/Carer Information Nights:
6:00-6:30pm Foundation
6:30-7:00pm Year 1 and 2 |
| Wednesday 21 | 1:00pm Onwards District Swimming – qualifying students
Online Parent/Carer Information Nights:
6:00-6:30pm Year 3 and 4
6:30-7:00pm Year 5 and 6 |
| Thursday 22 | Didgeridoo, Beats and Culture In-School Visit:
10:00-10:50am Year 4
11:40am-12:30pm Year 5
2:10-3:00pm Year 6
3:30-4:30pm Year 6 Student Leader Program |

Please Remember

School Tours start February 20

Term Dates

- Term 1, 2024 – 30 January -28 March
- Term 2, 2024 – 15 April – 28 June
- Term 3, 2024 – 15 July – 20 September
- Term 4, 2024 – 7 October – 20 December

Principal's Report



Our annual Family Picnic Evening, on Friday 1 March, is great fun and very popular with our families. Come along and join in the fun and activities and enjoy a picnic dinner with lots of other families. Please see the flyer in this newsletter. We also need parent volunteers to help during the evening please.



School Council 2024

Congratulations to the following parents who were nominated successfully for School Council for the next two years, March 2024 to March 2026: Raston Nga; Lina Pei; Anindita Dutta and (Bob) Weihai He. The two nominated teachers are Kym Robinson and Suzanne Haebich.

Thank you to the following School Councillors, who complete their term of service following our February meeting, for all their work and commitment to our school community: Chris Gilligan; Chris Jefferson; Janathan Ratnasabapathy; Rangana Alahendra; and Lisa Sun.

2024 Parent Contributions

Parent payments help the school to operate effectively. Glendal Primary School provides a significant range of programs and resources including laptops, iPads, computers and other materials that cannot be supplied without the optional support of families. We would like to thank the parents who have already made these contributions.

It is Not Great to Be Late

Students need to arrive promptly at school, ready to engage and learn. Please note that children need to be school and at their classrooms, ready to learn, by 9.00 am each school day.

For families where both parents may work and therefore need to drop off their children before 8:45 am, the school provides an Out of School Hours Care program managed by Camp Australia. Registration is via their website.

Student Mobile Phones at School

We understand that some parents wish their children to have a mobile phone to use when coming to school or returning home for safety reasons. These phones need to be handed in to the school office by 9.00am and then can be collected after school. **Students are not permitted to have mobile phones with them during the day at school.** If possible, it is best to leave mobile phones at home.

School Hours



School commences at 9:00am & concludes at 3:30pm. The arrival of children at school will be supervised from 8:45am. Children will also be supervised while they are leaving school until 3:45pm.

Please ensure your child arrives with enough time to get to their class. Late arrivals are a disruption to everyone.

Attendance



Parents are requested to use the Compass Parent Portal to notify of any child absences, preferably on the day before 9:30am or prior to the day/s.

New Address



如果您的住址和联系电话有变，请告知我校办公室。

Have your circumstances changed?

Update your contact details at the School Office as soon as possible.

Please ensure you let the school office know if you have changed address or updated mobile phones with new numbers.

This information alleviates stressful situations on students when they are ill and we cannot contact parents.

We are open...



Open Mondays
8:45 am to 9:30am
outside the MI cafe.

Please donate your quality uniforms!
Place donations in the blue bin outside the staff room.



It is NOT great to be LATE.

Annual Privacy Reminder for 2024

Our school collects, uses, discloses and stores student and parent personal information for standard school functions or where permitted by law as stated in the Schools' Privacy Policy. Please take time to remind yourself of our school's privacy policy, found on our website at www.glendal.ps.vic.edu.au.

For more information about privacy, refer to: Schools' Privacy Policy — information for parents:

<https://www.education.vic.gov.au/Pages/Schools-Privacy-Policy-information-for-parents.aspx>.

This information is also available in ten community languages:

Amharic, Arabic, Dari, Gujarati, Mandarin, Somali, Sudanese, Turkish, Urdu and Vietnamese.

Important Information - Student Accident and Private Property Insurance – Reminder

The Department of Education and Training (DET), and government schools, **do not** provide personal accident insurance for students. Parents and carers are generally responsible for paying the cost of medical treatment for injured students, including any transport costs. Reasonable low-cost accident insurance policies are available from the commercial insurance sector.

The Department of Education also does not hold insurance, nor does it accept responsibility for private property brought to school by students, staff and visitors.

Students are advised not to bring any unnecessary or particularly valuable items to school and are not allowed to bring any electronic toys and games to school.

Please ensure that you have **Ambulance cover** as this is not covered by the school or the Department.

Deborah Grossek

Principal



FINANCIAL ASSISTANCE INFORMATION FOR PARENTS

Every Victorian child should have access to the world of learning opportunities that exist beyond the classroom. The Camps, Sports and Excursions Fund helps ensure that no student will miss out on the opportunity to join their classmates for important, educational and fun activities. It is part of making Victoria the Education State and the Government's commitment to breaking the link between a student's background and their outcomes.

CAMPS, SPORTS & EXCURSIONS FUND (CSEF)

School camps provide children with inspiring experiences in the great outdoors. Excursions encourage a deeper understanding of how the world works while sports teach teamwork, discipline and leadership. All are a part of a healthy curriculum.

CSEF is provided by the Victorian Government to assist eligible families to cover the costs of school trips, camps and sporting activities.

If you hold a valid means-tested concession card or are a temporary foster parent, you may be eligible for CSEF. A special consideration category also exists for asylum seeker and refugee families. The allowance is paid to the school to use towards expenses relating to camps, excursions or sporting activities for the benefit of your child.

The annual CSEF amount per student is:

- \$150 for primary school students
- \$250 for secondary school students

MORE INFORMATION

For more information about CSEF visit:

<https://www.education.vic.gov.au/about/programs/Pages/csef.aspx>

HOW TO APPLY

New applicants should contact the school office to obtain a CSEF application form or download from the website below.

If you applied for CSEF at your child's school last year, you do not need to complete an application form this year unless there has been a change in your family circumstances.

You only need to complete an application form if any of the following changes have occurred:

- new student enrolments; your child has started or changed schools this year.
- changed family circumstances; such as a change of custody, change of name, concession card number, or new siblings commencing this year.

Check with the school office if you are unsure.

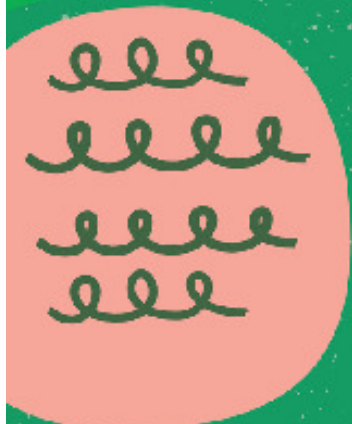




- Games & Activities
- Show cohes
- Sausage sizzle
- Food Trucks
- School Performances
- Book Stall
- Sports clubs
- PLUS much more!

FAMILY PICNIC NIGHT

FRI
01.MAR
5:30-8:00pm



Bring your family, friends
& picnic rug too!

PLEASE BRING CASH ON THE NIGHT.
ENTRY:
\$3.00
PER PERSON



children must be accompanied by an adult.

STRICTLY No alcohol allowed.

Proudly organised by
Glendal Parents Group

PARENT VOLUNTEERS REQUIRED • Simply Sign up using the QR code above.

Confidence Communication Skills Creativity

superspeak



Weekly public speaking, drama & presentation skills for ages 6-14

IN-PERSON or ONLINE

- ★ Leading Curriculum
- ★ Experienced Teachers
- ★ Loads of FUN!

communication

- ★ quick thinking
- ★ **expression**
- ★ teamwork
- ★ **confidence**
- ★ leadership
- ★ **persuasion**
- ★ vocal variety

ENROL NOW
Glen Waverley, Chadstone, Burwood, Essendon, Doncaster, Canterbury, Rowville, Ashburton, Ivanhoe, Thornbury, Altona Meadows, Balwyn North, Truganina, Caroline Springs & Online

Award Winning Program
Trusted Since 2006



9572 5249

info@SuperSpeak.com.au
www.SuperSpeak.com.au

CHESS at Glendal Primary

Chess is the original and enduring "thought sport" played throughout the world and has many benefits for young people. These include improved cognitive skills as well as self confidence and resilience. With coaches who rank among the best players in the country our chess programs are tailored to suit the needs of all abilities.

**ENROL
ONLINE
NOW!**

**TRIALS
AVAILABLE!**
PLEASE CALL TO
BOOK ONE IN

THURSDAY, 3:30-4:30 PM

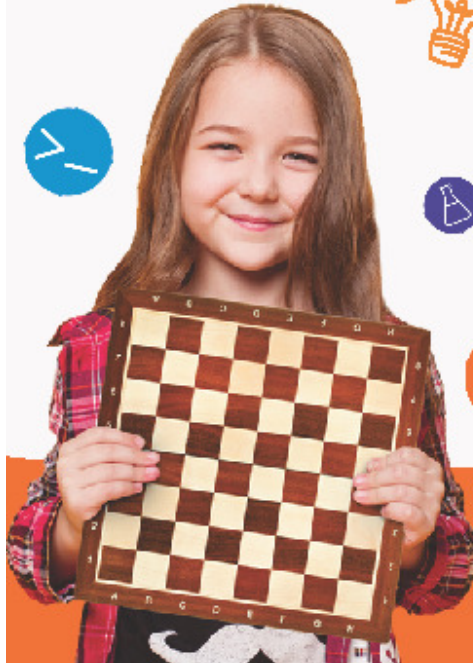
STARTS ON 8 FEB

\$192 FOR 8 SESSIONS

FOR YEARS 1-6

ROOM: FOUNDATION J, K, L, M &
LANGUAGE ROOM

Scan or click
the QR code
to enrol
online!



**Kids
Unlimited**

 info@kidsunlimited.com.au
 www.kidsunlimited.com.au
 1300 424 377

Learn music

here at school

Come and join in the fun of learning to play keyboard, guitar, here at Glendal Primary School.

Creative Music for Schools conducts a music program here at school each week.

Small group classes or one-to-one lessons of up to 30 minutes give children an excellent grounding in music where they will learn to read music and play their chosen instrument.

Enrolments are now being accepted for limited places in term 1, 2024.

Interested parents should call Sharon during office hours on 9818 2333 or via email: sharon@creativemusic.com.au

 Creative Music
www.creativemusic.com.au



Kids Self Defence & Fitness Classes

Glendal PS
(School Gym)

Wednesdays

3:45-4:45pm

Or

Thursdays

3:45—4:45pm

Boys & Girls

Grades 1 - 6



Contact : Cliff Wilson

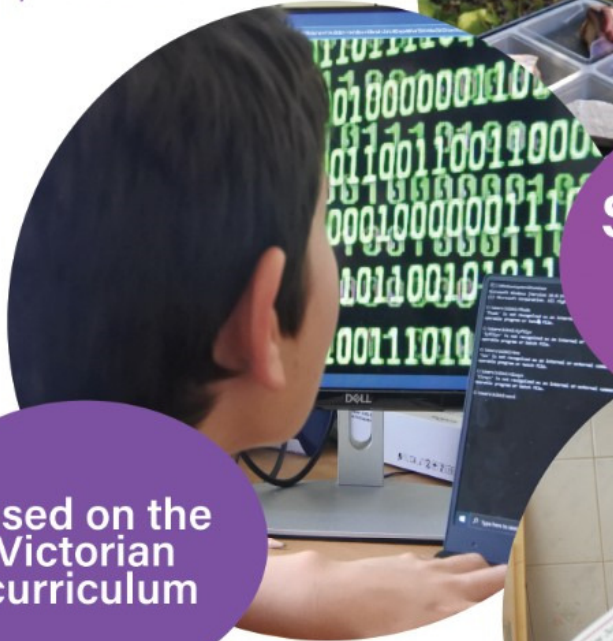
M: 0418 150 405

E: cliffwilson@caydam.com

W: caydam.com

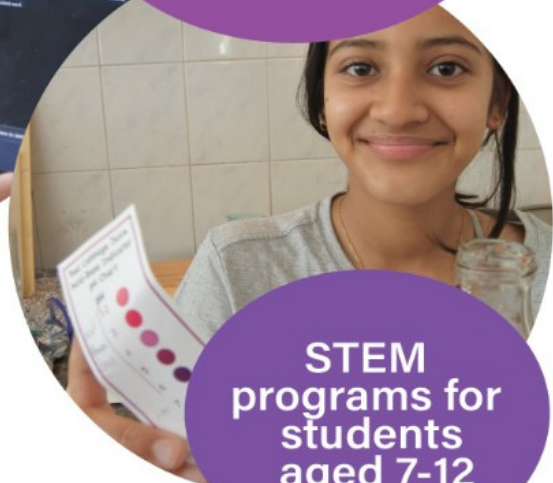


STEM ENDEAVOURS
explore, expand & understand



**Starting from
\$115 for
6 lessons!**

**Based on the
Victorian
curriculum**



**STEM
programs for
students
aged 7-12**



STEM ENDEAVOURS
explore, expand & understand

STEM courses for students aged 7-12yrs

**REGISTRATION IS
NOW OPEN!**

Courses starting on May 17th
Glen Waverley

For location, booking and other information
visit stemendeavours.com

Scan me for more
information!



MUSIC BUS LESSONS AT OUR SCHOOL! JOIN NOW!

THE MUSIC BUS RUNS LESSONS EACH WEEK AT OUR SCHOOL.

Lessons are available in:

- Keyboard (Foundation to Year 6)
- Ukulele (Foundation to Year 6)
- Drums (Year 1 to Year 6)
- Guitar (Year 2 to Year 6)

If you wish to register an interest to join, please complete the following online form:

<https://app.smartsheet.com/b/form/ee4627a5204c46158e1ab17e7c8069c6>

Advertisements published by the school are accepted in good faith and should not be regarded as an endorsement of any product or service. Parents and members of the school community are advised to investigate any service or product to determine its suitability to meet their family's needs prior to accessing it.